

Olive Court 2 residential complex

Location Famagusta, Yeni Boğaziçi



About the project



| | | |
|----------------|---|-----------------|
| Developer | Dörter Construction | |
| Start of sale | 01.09.2022 | |
| Key handover | 2024 | |
| Houses/blocks | 8 | |
| Building floor | 2 Min | 2 Max |
| Units total | 28 - 1+1, 28 - 2+1, 2 - 3+1 Villas | |

Distance to the sea - 1200 m

Distance to the key locations:

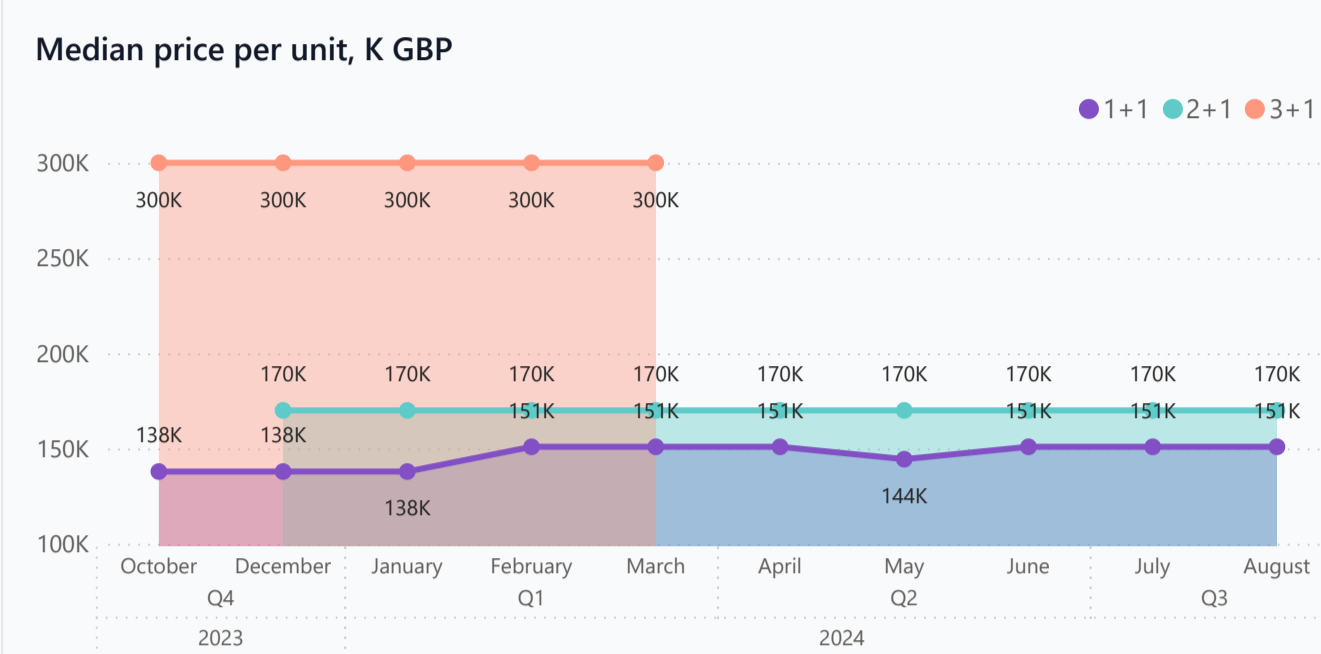
4 minutes to Middle East Hospital and Collegelt is 7 minutes from Long Beach Pier, 7 min. to the State Hospital Iskele Famagusta, 7 minutes to the Salamis Forest and the ancient city of Salamis, 6 minutes Barnabas Monastery

Olive Court 2 is located in Yeni Boğaziçi town, a Cittaslow Member. The project has 58 residential units, including 1+1, 2+1 loft types and twin villas. Just a 10-minute walk from the sea. Modern architecture and thoughtfully designed green landscape, where every detail has been carefully considered.

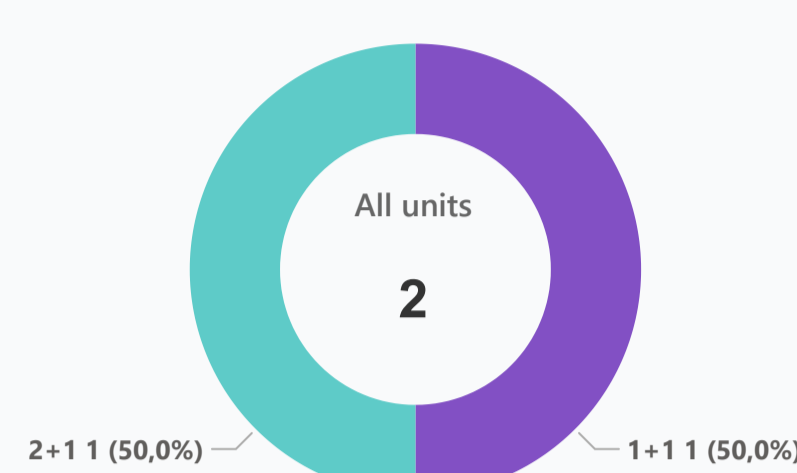
Complex infrastructure

- Café
- Central generator
- Open pool
- Security Camera System

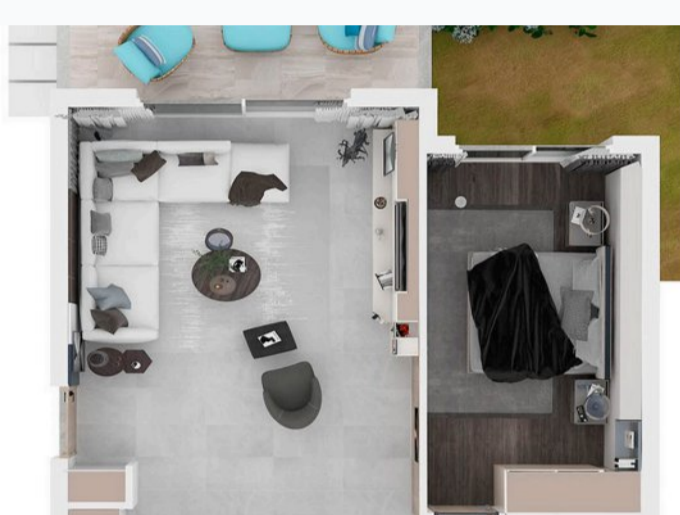
Available units 2 / 65 total



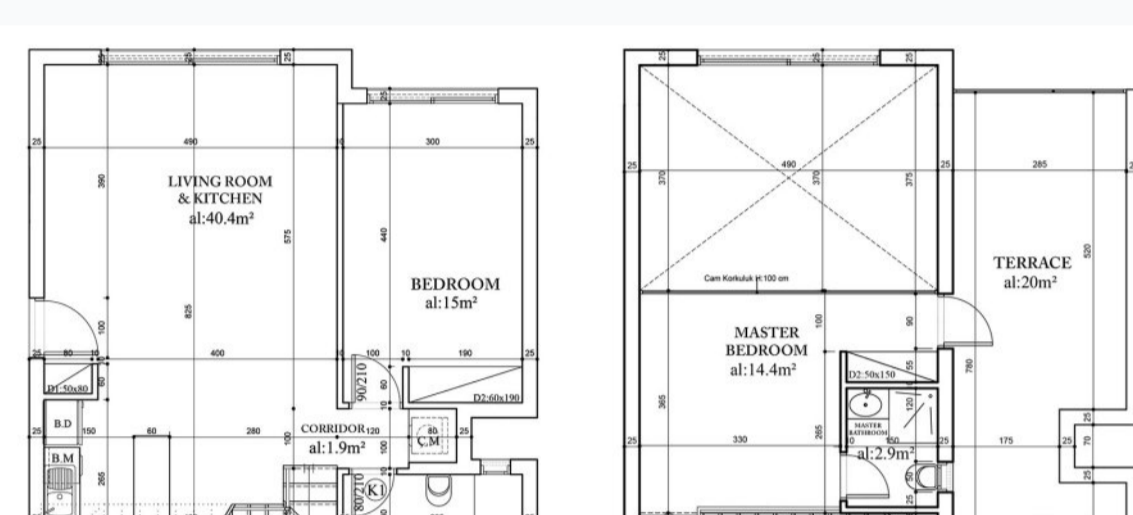
Structure of available units



Plans



1+1



2+1

Payment plans

Deposit (non-refundable) 5000 GBP for a month

| Option | Down payment | Installments months | Discount | Offer |
|----------|--------------|----------------------|----------|-------|
| Option 1 | 40 % | 30% till key, 30%... | - | - |
| Option 2 | - | - | - | - |
| Option 3 | - | - | - | - |
| Option 4 | - | - | - | - |

Special offer

Fully furnished design package

Rental guarantee

Trafo 1200 GBP

Resale -

Maintenance fee -

Rental services -

Details

| Bedrooms | Subtype | Block | Unit № | Floor | View | Bathroom | Internal area, sq. m | Balcony/Terrace, sq. m | Rooftop terrace, sq. m | Garden, sq. m | Gross covered area, sq. m | Current price, GBP | Price per sqm, GBP |
|----------|---------|-------|--------|-------|------|----------|----------------------|------------------------|------------------------|---------------|---------------------------|--------------------|--------------------|
| 1+1 | Flat | D | D2 | 0 | | | 71 | 14 | | | 90 | 150 900 | 1 677 |
| 2+1 | Loft | B | D5 | 01 | | | 94 | 24 | | | 125 | 170 000 | 1 360 |

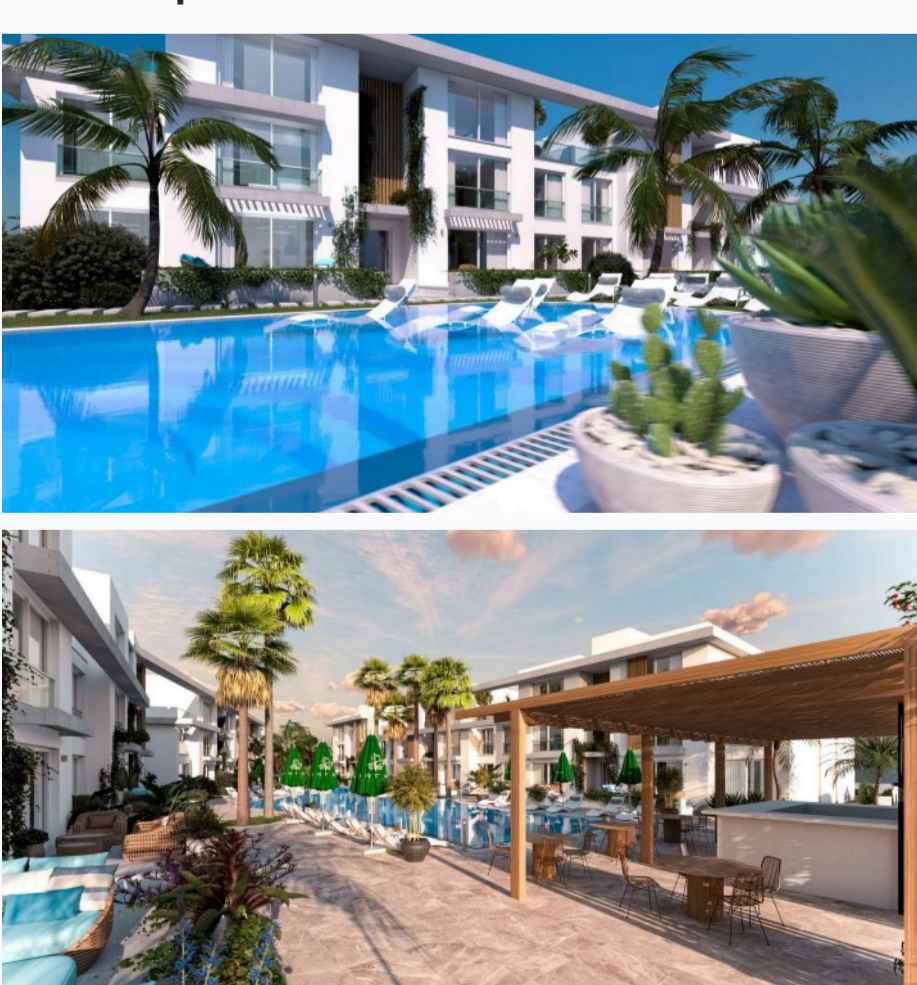
Interior specification



Interior specification

- Ceramic flooring
- Double glazed windows
- Toilet integrated in the walls

Exterior specification



Exterior specification

Location of complex

